



STEPHENSON CONSTRUCTION REGIONAL PROFILE SCOTLAND



www.stephenson-group.co.uk

Stephenson was founded in 1962 and over the years has developed a reputation within the industry for integrity, commitment and performance meeting with Contractor's and client's requirements.

The **Stephenson Group** now comprises of Reinforced Concrete Frames, Shell & Core and Development Divisions along with Specialist Contracting, Plant Hire and Sales. We are actively involved in development and construction partnering packages with key clients.

Stephenson's experience encompasses every available reinforced concrete frame and RC Hybrid frame solution available in the market today.

In addition to developing and utilizing formwork and falsework systems, Stephenson continues to research emerging reinforced concrete frame concepts, and the company is actively involved through 'CONSTRUCT' in promoting economic and fast track design and construction techniques.

Stephenson RC Frames are currently active throughout the UK in the following **market sectors**;

- Build to rent
- Commercial
- Education
- Hotel/Leisure
- Medical
- Private Residential
- Residential
- Student Accommodation

Our **areas of operation** encompasses all the UK, with the Head Office in Horsham, West Sussex and regional offices in Wales & Scotland.

Head Office

M R Stephenson Ltd
Provender Mill
Mill Bay Lane Horsham
West Sussex
RH12 1SS

T: +44 1403 217000

E: info@stephenson-group.co.uk

Design

- Full Structural Design
- Design Development
- Reinforced Detailing

Substructure

- Piling
- Excavation
- Temporary Works
- Reinforcement
- Formwork
- Concrete Drainage
- External Works

Construction

- General Contracting
- Shell & Core
- Development and Project
- Management Services

Construction Management

- Management Services

Superstructure

- Enable Works
- Falsework & Formwork
- Hybrid Solutions
- In-situ Concrete Frames
- Scaffolding
- Screeding
- Precast Elementals
- Structural Steel

Stephenson Developments

- Residential
- Student
- Retirement
- Commercial
- Private Rental Schemes

City Wharf, Glasgow

Residential

Client Dandara Living

Main Contractor Dandara Living Limited

Architect Manson Architects

Engineer Etive Consulting

Phase 1 of a development that has planning for three phases in total. This will be a full delivery commencing from pile attendance including 2 full crew of 13T excavators and 6T dumpers. All muckaway on the project. Remediation and segregation is key to control due to the quantity. Groundworks will cover membrane and insulation to the ground floor slabs. Delivering an 8 storey frame with circa 15,000m² of soffit. The cores will be a combination of slipform for the two complex cores and then traditional floor to floor for the simple stair core. All craneage will be provided by Dandara Living Ltd, and we will provide supplementary crane team. In total we will be completing circa 6,500m³ of concrete pours, installing 980T of Reinforcement and moving over 3,500m³ of muck off the project.



Liberton High School, Edinburgh

Education

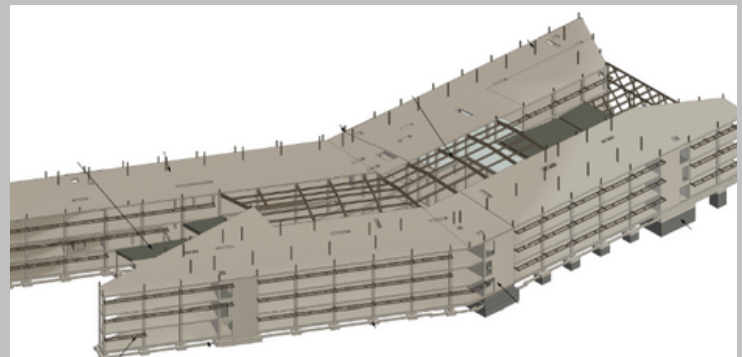
Client City of Edinburgh Council

Main Contractor Balfour Beatty

Architect JM Architects

Engineer Etive Consulting

New Educational Facility at Liberton High School, Edinburgh. The scope of our works will be, delivery of the full RC Frame including the ground floor slab. We will be using a mixture of traditional and slip form cores to deliver the scheme. In total there are 5 cores, 3 being chosen to be delivered in slipform due to their complex geometric nature. A range of columns will be delivered using our steel box moulds, with a couple of special columns being delivered using alternative methods. Two tower cranes on the scheme. The superstructure is mainly traditional with a sloping roof. Pre cast stairs (install only by SCNL). Traditional RC Slabs at 275mm thick with a total soffit area of circa 11,500m² will have us delivering a total reinforcement quantity in the region of 800T and Pouring circa 5,800m³ of concrete.



Completed Projects

Jocelyn Square, Glasgow

Accommodation

Client Ubanite

Main Contractor Robertson Construction Ltd

Architect NW Architects

Engineer Blyth & Blyth

New Student Accommodation in Glasgow. Our Scope of works includes all works from the grub and clear, pile mat installation, pile attendance, foundations, drainage, ground floor slab, full superstructure. Our package also includes the hire and operation of the Tower Crane.



Perth High School, Perth

Education

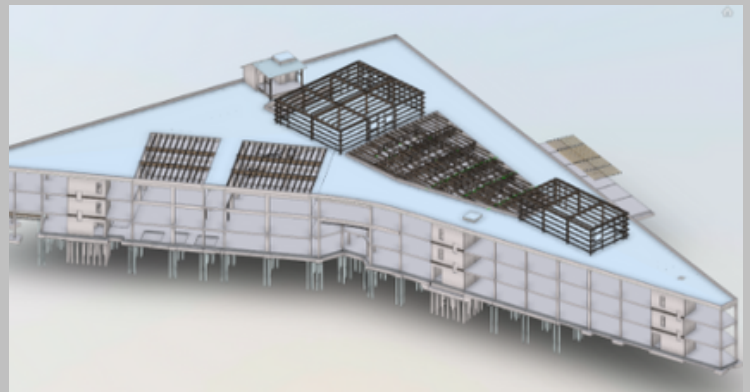
Client Hub East Central Scotland

Main Contractor Robertson Construction Ltd

Architect NORR Consultants Ltd

Engineer Baker Hicks

New High School in Perth. This is a Superstructure only scheme. Comprising of 3 suspended floors. 5 cores, inclusive of pre cast stairs. We will also provide all crange to the project. This is a tower crane and a supplementary mobile. The scheme will be Circa 5000m3, 13200m2 soffit, 1000T



Semple Street, Edinburgh

Commercial

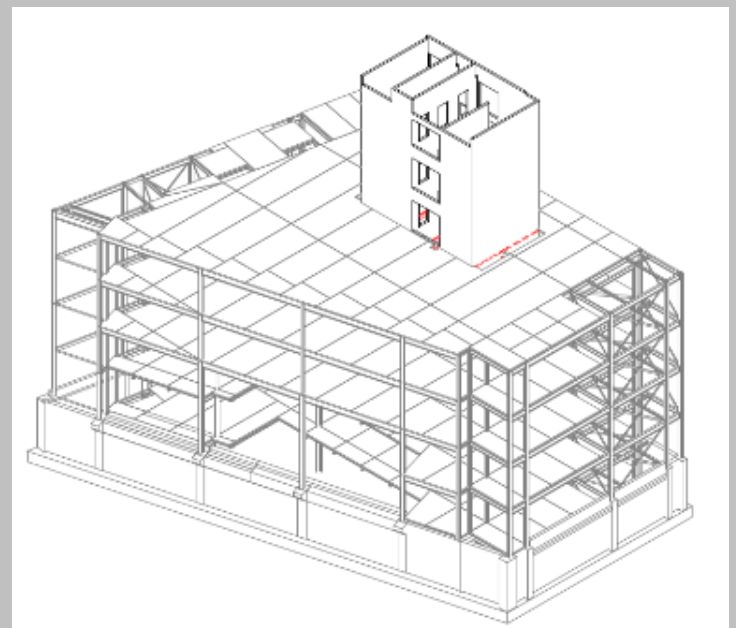
Client BBC Pension Trust/CBRE Global Investors

Main Contractor Ogilvie Construction

Architect Michael Laird Architects

Engineer Blyth & Blyth

New Core base, small retaining walls and then a central slipform core within an existing structure. Metal deck slabs to be poured at a later date but within our scope. Temporary propping to structure using RMD Megashore by ourselves. Small section of external ramp to extend for better access to rear of building.



Completed Projects

Greenmarket, Dundee

Commercial

Client Glencairn Properties

Main Contractor Ogilvie Construction

Architect N/A

Engineer Will Rudd

Our Scope of works for this project includes the slipform core to a height of 20 meters, inclusive of the cast in plates to receive the steel frame. All lifting is completed by Stephenson with the estimated time on site of approximately 6 weeks.



Baird & Anchor Hospital, Edinburgh

Medical

Client NHS Graham

Main Contractor Grahams Construction

Architect NORR Consultants Ltd

Engineer Mott McDonalds

Baird - Capping beam, basement slabs, retaining and liner walls, superstructure over four suspended levels

Anchor - Ground floor slab, retaining wall and one suspended podium slab

Both - CDP waterproofing by SSC as well as four tower cranes and mobile cranes by SSC



Montrose Terrace, Edinburgh

Student Accommodation

Client Glencairn Properties

Main Contractor Graham Construction

Architect 56three Architects

Engineer Will Rudd

All mass fill foundations bearing off rock, capping beam to two elevations, drainage, attenuation tank, basement, ground floor and suspended ground transfer slab providing 149 student studios and cluster flats



Completed Projects

Institute of Regeneration & Repair expansion, Edinburgh

Education

Client University of Edinburgh

Main Contractor Balfour Beatty

Architect Stantec Limited

Engineer Jacobs

A 5 storey frame for the university of Edinburgh - An expansion building off the side of phase 1 of the scheme. Stephenson undertook all the superstructure works and ground floor slab



Dundee Street, Edinburgh

Student Accommodation

Client CA Venture

Main Contractor Watkin Jones

Architect GWP Architecture

Engineer Etive Consulting Engineers

A 225 bed student accommodation in Edinburgh, built over 6 storeys. We completed the full groundworks and reinforced concrete superstructure package. On site for a total of 30 weeks pouring over 3,000m³ of concrete



Stanley Place, Edinburgh

Student Accommodation

Client CA Ventures

Main Contractor Clark Contracts

Architect 56three Architects

Engineer Etive Consulting Engineers

Stanley Place is a 4 storey circa, 102 bed student accommodation block. We are undertaking the full delivery of the frame including the groundworks, drainage and superstructure. 3 Cores are being jumped ahead of the main frame allowing a speedy superstructure cycle.



Completed Projects

Mayfield Road, Edinburgh

Student Accommodation

Client Audley Modular Students Living

Main Contractor Clark Contracts

Architect 56three Architects

Engineer Etive Consulting Engineers

Mayfield Road is a modular superstructure student accommodation scheme. Delivering all the works up to and including the podium slab. Our main works comprise of two phases, both with two jump form cores to four floors with a suspended podium slab on both phases.



Cathedral Street, Glasgow

Medical

Client CA Ventures

Main Contractor Watkin Jones

Architect Corstophine & Wright

Engineer Tier Consult

A 422 bed student accommodation project in the heart of Glasgow, including both the groundworks and 21 storey reinforced concrete frame supported by a slipform core



New Waverly Place, Edinburgh

Private Residential

Client Cruden Homes East

Main Contractor Cruden Homes East

Architect Allan Murray Architects

Engineer Etive Consulting Engineers

A 7 storey reinforced concrete frame with four jumpform cores



Completed Projects

Edinburgh Future Institutes Phase 2, Edinburgh

Education

Client University of Edinburgh

Main Contractor Balfour Beatty

Architect Bennetts Associates

Engineer Will Rudd Davidson

Back into EFI for phase 2 of our reinforced concrete superstructure package, now delivering the center piece of the building - The main event space. This is a basement presentation space right under the front entrance of the building. All concrete is being delivered to a high architectural finish with columns, walls and soffits all to be left exposed



Edinburgh Future Institutes, Edinburgh

Education

Client University of Edinburgh

Main Contractor Balfour Beatty

Architect Bennetts Associates

Engineer Will Rudd Davidson

5 Primary areas of work which are the North, East and West extensions. The South-East and West infill sections and finally, the event space to the Northern entrance. It included columns and suspended slabs to 4 levels with exposed soffits



Music Centre, St Andrews

Education

Client University of St. Andrews

Main Contractor Graham Construction

Architect Flanagan Lawrence

Engineer Will Rudd Davidson

2 Separate, 3 storey reinforced concrete frame blocks. This project received a highly commended award at the 2020 Concrete Society Awards



Completed Projects

Kyle Street, Glasgow

Student Accommodation

Client Watkin Jones

Main Contractor Watkin Jones

Architect Fletcher Joeseeph Associates

Engineer Etive Consulting Engineers

A 401 Bed student accommodation including, groundworks, 9 & 11 storey reinforced concrete frame with 5 jumpform cores.



Motel One, Glasgow

Hotel

Client Motel One

Main Contractor Ogilvie Construction

Architect Leach Rhodes Walker

Engineer Woolgar Hunter

14 Suspended floors of post-tensioned slabs with single storey precast columns and 2 cores taken up traditionally. Our scope of works included the reinforced concrete elements of the groundworks, including a ground floor slab and PT slabs above level 14



Torphicen Street, Edinburgh

Hotel

Client Axcel Hospitality

Main Contractor Ogilvie Construction

Architect CDA

Engineer Quattro

A 150 bed, 9 storey traditional reinforced concrete frame with 2 jumpform cores



Completed Projects

Forthside, Stirling

Student Accommodation

Client UK PBSA

Main Contractor Ogilvie Construction

Architect Susan Stephen Architects

Engineer Etive Consulting Engineers

A 3 storey traditional reinforced concrete frame to sit a light gauge steel frame building on top which will create a high quality, 207 bed student accommodation with great access to the town and university.



Raddison Red, Glasgow

Hotel

Client Bridgewater College

Main Contractor Midas Construction

Architect Austin Smith Lord

Engineer Atkins Lts

The 174 bed, 10 Storey building. Raddison Red faces onto the SECC and Hydro Arena. The rooms are situated between the 1st and 8th floors, a bar and roof terrace on the 9th floor and restaurant/bar located on the ground floor



Prince & Princess of Wales, Glasgow

Medical

Client Prince & Princess of Wales Hospice

Main Contractor Balfour Beatty

Architect Ryder Architecture

Engineer Woolgar Hunter

A 2 storey reinforced concrete frame and groundworks. This project received a Highly Commended Award in 2019 from the Scottish Design Awards.



Completed Projects

Higgs Laboratory

Education

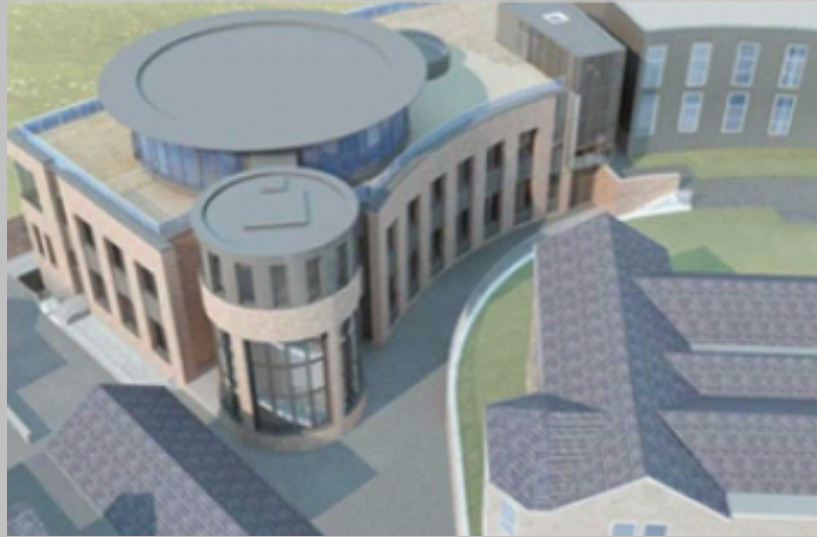
Client University of Edinburgh

Main Contractor Graham Construction

Architect JM Architects

Engineer Jacobs

The Higgs Centre brings together world class research in astronomy, particle physics and the instrumentation expertise that underpins it, with business incubation facilities and laboratories suitable for commercial use. This was a 3 storey 'bubbledeck' slab construction.



Buccleuch Place, Edinburgh

Student Accommodation

Client University Of Edinburgh

Main Contractor Graham Construction

Architect JM Architects Ltd

Engineer Blyth & Blyth

Buccleuch Place Lane is a property with 136 single en-suite study bedrooms all within flats, each with their own shared kitchen / living area over 2, 5 storey blocks.



Old Dumbarton Road, Glasgow

Student Accommodation

Client Watkin Jones

Main Contractor Watkin Jones

Architect Mason Architects

Engineer Etive Consulting

These student residences provide 201 bed spaces across 9 storeys for the university of Glasgow.



Completed Projects

[Firhill Partnership Centre, Edinburgh](#)

Commercial

Client HUB Scotland

Main Contractor Graham Construction

Architect Hoskins Architects

Engineer Patrick Parsons

The main emphasis on this project was to deliver modern health care facilities with local authority integration to provide co location of staff and better services for patients and service users across a 2 storey reinforced concrete frames.



[Lutton Court, Edinburgh](#)

Student Accommodation

Client Crosslane Student Developments

Main Contractor Ogilvie Construction

Architect JM Architects Ltd

Engineer Patrick Parsons

235 bedroom student accommodation made up of a mixture of cluster bedrooms with shared kitchen facilities and studios with self-contained bedrooms and kitchens over 4 blocks, ranging in heights up to 5 storeys.



[Institute of Regeneration & Repair, Edinburgh](#)

Education

Client University of Edinburgh

Main Contractor Balfour Beatty

Architect Stantec Limited

Engineer Jacobs

Ground floor slab and 4 suspended slabs as well as roof slab. Circular exposed columns to perimeter of the building.



Completed Projects

St Mungo's, Glasgow

Student Accommodation

Client Watkin Jones

Main Contractor Watkin Jones

Architect Fletcher Joseph

Engineer Etime Consulting

This scheme is subdivided into 2 distinct blocks of varying weight flanking a colonnaded shared access space with a 'tower' element emphasizing the corner. The project including groundworks, drainage and frame with slipform cores and circular exposed columns.



Dunaskin Street, Glasgow

Student Accommodation

Client Knightsbridge

Main Contractor Watkin Jones

Architect Fletcher Joseph

Engineer Etime Consulting

Forming 504 student flats over 5 new buildings on the site of the former Scotstoun Flour Mill, this project overlooks the River Kelvin and is on the periphery of the main university campus.



Baxter's Place, Edinburgh

Hotel

Client Chris Stewart Group

Main Contractor Interserve

Architect Delta Simmons

Engineer Blyth & Blyth

This hotel offers circa 240 bedrooms over 7 floors of post-tensioned concrete frame, including traditional cores and columns.



Completed Projects

Pittodrie Street, Aberdeen

Student Accommodation

Client Newmark Developments

Main Contractor Robertson Construction

Architect Mansons

Engineer Etive Consulting Engineers

2, 5 storey reinforced concrete frames totaling 618 student beds. Operated by Student Roost, these rooms offer stylish, high-quality accommodation and on-site amenities for students from the University of Aberdeen and Robert Gordon University.



Springside, Edinburgh

Student Accommodation

Client Knightsbridge

Main Contractor Ogilvie Construction

Architect Capita Symonds Ltd

Engineer Blyth & Blyth

6 floors of post-tensioned concrete frame with traditional cores and columns including stairs and landings providing 302 student rooms.



Abbey Hill, Edinburgh

Student Accommodation

Client Watkin Jones

Main Contractor Watkin Jones

Architect Mason Architects

Engineer Blyth & Blyth

The construction of Abbey Hill which provides 450 beds includes a capping beam and one-sided wall, a basement, groundworks, waterproofing, ground floor slab and level 1 podium slab.



Public Sector

- Hopetoun Street, Edinburgh

Residential

- Holyrood, Edinburgh
- Loggie Green, Edinburgh
- Meadow Lane, Edinburgh
- Arun house, Fountainbridge, Edinburgh

Medical

- RHSC & DCN, Edinburgh
- NorthWest Partnership, Edinburgh

Commercial

- Hopetoun Street, Edinburgh
- East Fettes, Edinburgh
- The Plaza, Glasgow
- St. Andrews
- Corner Site, Edinburgh
- Festival Park, Glasgow
- Brunswick Rd, Edinburgh
- Slateford Rd, Edinburgh
- Forthguater Park, Edinburgh
- Glasgow Harbour
- Belford Lodge, Edinburgh
- Lomond House, Edinburgh
- Ingram Street, Glasgow
- Kingston Street, Glasgow
- Glasgow Cross, Glasgow
- Salamander Street, Edinburgh
- Crowthorn House, Glasgow

Education

- North Glasgow College
- Edinburgh University
- Glasgow University
- St. Andrews College
- Higgs Laboratory