



STEPHENSON CONSTRUCTION REGIONAL PROFILE NORTH & CENTRAL



www.stephenson-group.co.uk

Stephenson was founded in 1962 and over the years has developed a reputation within the industry for integrity, commitment and performance meeting with Contractor's and client's requirements.

The **Stephenson Group** now comprises of Reinforced Concrete Frames, Shell & Core and Development Divisions along with Specialist Contracting, Plant Hire and Sales. We are actively involved in development and construction partnering packages with key clients.

Stephenson's experience encompasses every available reinforced concrete frame and RC Hybrid frame solution available in the market today.

In addition to developing and utilizing formwork and falsework systems, Stephenson continues to research emerging reinforced concrete frame concepts, and the company is actively involved through 'CONSTRUCT' in promoting economic and fast track design and construction techniques.

Stephenson RC Frames are currently active throughout the UK in the following **market sectors**;

- Build to rent
- Commercial
- Education
- Hotel/Leisure
- Medical
- Private Residential
- Residential
- Student Accomodation

Our **areas of operation** encompasses all the UK, with the Head Office in Horsham, West Sussex and regional offices in Wales & Scotland.

Head Office

M R Stephenson Ltd
Provender Mill
Mill Bay Lane Horsham
West Sussex
RH12 1SS

T: +44 1403 217000

E: info@stephenson-group.co.uk

Design

- Full Structural Design
- Design Development
- Reinforced Detailing

Substructure

- Piling
- Excavation
- Temporary Works
- Reinforcement
- Formwork
- Concrete Drainage
- External Works

Construction

- General Contracting
- Shell & Core
- Development and Project
- Management Services

Construction Management

- Management Services

Superstructure

- Enable Works
- Falsework & Formwork
- Hybrid Solutions
- In-situ Concrete Frames
- Scaffolding
- Screeding
- Precast Elementals
- Structural Steel

Stephenson Developments

- Residential
- Student
- Retirement
- Commercial
- Private Rental Schemes

Current Projects

Pottery Lane, Newcastle

Student Accommodation

Client Olympian Homes

Main Contractor R G Group

Architect Hodder + Partners

Engineer Apex

Drainage (3.4km), Substructure and Concrete frame to construct 2 No Student Accommodation Blocks. Block 1 12no suspended slabs, Block 2 9 suspended slabs, incl roofs. Total 39,280m² floor area.



Pilgrims Place, Newcastle

Commercial

Client Reuben Brothers (Newcastle) Ltd

Main Contractor Bowmer & Kirkland

Architect Ryder

Engineer Cundall

This is an office complex split over two buildings with a central car park area. Built within the graded footpaths & highways on two elevations and a 2 storey basement dig. An existing secant piled wall and capping beam needs temporary propping. A new section of secant pile and capping beam to be formed early will allow bulk dig to commence. All foundations and drainage by ourselves. Waterproofing to the liner walls and cores included in our scope. Slabs are a mix of flat and falling (car park areas), all columns to the podium by ourselves and include the HDB's cast in for the structural steel frame. All three cores to be slipped and stairs to be stairform.



Arena Point, Leeds

Student Accommodation

Client Olympian

Main Contractor RG Group Ltd

Architect O'Connell East Architects

Engineer Apex

Constructing a 44-Storey Student Accommodation Block: A 90-Week Program
The 90-week program includes piling attendance, drainage, constructing substructure and concrete frames to erect a 44-storey student accommodation block.



Fairfax House, Manchester

Residential

Client Olympian

Main Contractor RG Group Ltd

Architect

Engineer Apex

The 75-week program involves the basement groundwork, drainage, construction of two reinforced concrete (RC) frame towers (29 and 23 floors), and two slipform cores, which include stairs and landings.



Completed Projects

Pilgrim Quarter, Newcastle

Commercial

Client Reuben Brothers (Newcastle) Ltd

Main Contractor Bowmer & Kirkland

Architect Ryder

Engineer Cundall

12-month program involves four primary bases and superstructure slipform cores, with heights ranging from 7 to 10 stories. While our team will oversee the management of the core bases, F&S will offer their expertise in all slipform operations.



Lombard House, Nottingham

Student Accommodation

Client Unite

Main Contractor RG Group

Architect HCD

Engineer Apex

33-Week Project to Build 10-Storey Student Accommodation Block with Focus on Attendance, Drainage, Substructure, and Concrete Frame.



Alfreton Road, Nottingham

Student Accommodation

Client Olympian

Main Contractor RG Group

Architect Hodder & Partners

Engineer Apex

48-week student accommodation programme, set to complete Drainage (covering 2.4km), Substructure, and Concrete frame construction for the creation of three distinct Student Accommodation Blocks. Notably, the Alfreton Block will feature 8 suspended slabs, Highurst Block will integrate 5 suspended slabs, and the Spine Block will include 6 slabs, incorporating roofs. The collective floor area for these blocks will encompass a total of 23,300 square meters.



Completed Projects

Swan House, Manchester

Residential

Client Cable Swan Limited

Main Contractor RG Group

Architect Simpsonhaugh

Engineer Curtins

The private residential project is situated within a single building comprising two towers, one standing at 32 stories and the other at 14 stories. The project involves temporary works on the existing structure, groundworks, and detailed drawings. The construction features slipformed cores and flat slab superstructure slabs with a precast concrete edge-of-slab design.



Leonardo Building, Leeds

Student Accommodation

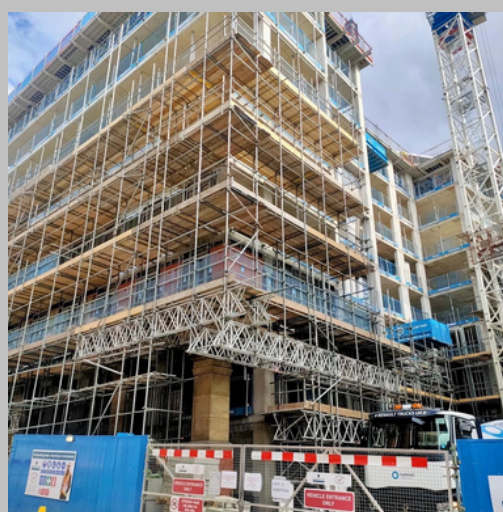
Client McLaren's

Main Contractor Robertson Construction

Architect Cartwright

Engineer Hydrock

A new student accommodation block, featuring 258 beds across 10 floors, is being constructed in central Leeds. Our responsibilities involve groundworks, drainage, piling, waterproofing, substructure, and concrete framing.



Sherlock Street, Birmingham

Residential

Client Cable Swan Limited

Main Contractor Watkin Jones

Architect Simpsonhaugh

Engineer Curtins

551 residential apartments spread across 6 reinforced concrete blocks, with varying storeys of 29, 13, 12, and 3x9, accompanied by commercial ground floor units and landscaping. Stephenson will also finalize the groundworks and drainage.



Public Sector

-

Commercial

- PSDA, Liverpool
- Springfields, Manchester
- West Yorkshire Play House
- Paradise Street, Liverpool

Residential

- Muse A5/A6, Manchester
- Great George Street, Leeds
- City Islands, Leeds
- Bradshawgate, Bolton
- Echo Central, Leeds
- Numb, Sheffield

Education

- Skelmersdale & Ormskirk College, Lancashire
- Durham John School, Durham
- LRC, Sheffield
- Science Central, Newcastle

Medical

-

Student Accomodation

- Albert Works, Sheffield
- Speedwell Works, Sheffield
- Kings Bridge, Huddersfield
- Belle Vue, Leeds
- Gatecrasher, Sheffield

Hotel/Leisure

- The Square, Birmingham

Civils

-